



- Restaurant
- Retail
- Residential
- Refurb

www.bluecrowprojects.com

Bluecrow Projects

Lucky Cat

By Gordon Ramsay

Afroditi Krassa

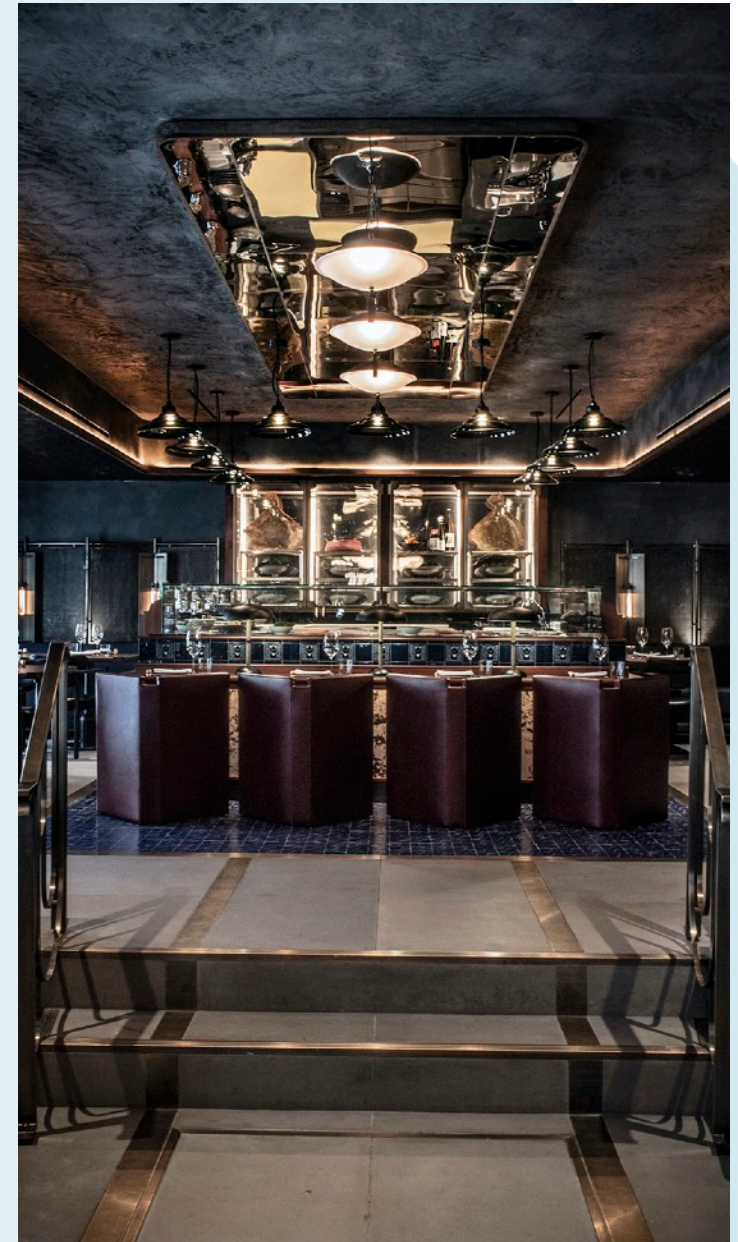


The showpiece bar frontage is complimented throughout the design with intricate brass details and accents.

"Lucky Cat has been a long-time vision for me and I can't wait to bring it to life," says Gordon Ramsay.



Lucky Cat takes its inspiration from drinking dens of the 1930's Tokyo with many sensational bespoke design features including the bar which is faced with intricate brass bamboo panelling.



Bluecrow Projects

Felix Warley

DesignLSM

"We would really like to thank the Felix team for the opportunity to work with them on this very special project and the Bluecrow team for executing the design with such precision and passion.

What a journey..."





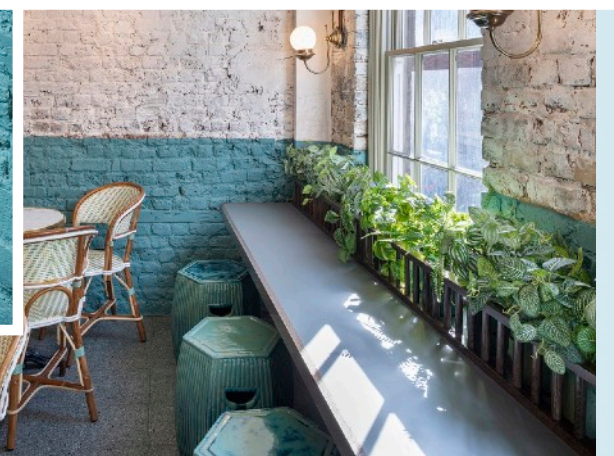
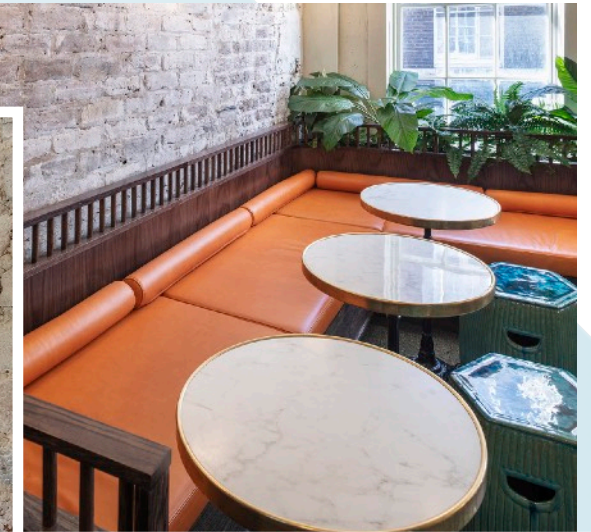
Bluecrow Projects

Bun House



"We could not be more pleased with the service we received from their team. From the tender process, fit out, and handover, Bluecrow really went above and beyond in delivering a high quality fit-out."





Bluecrow Projects

The Laundry

3Stories Design



"Having had the pleasure to be introduced to Bluecrow via our wicked Design Team 3 Stories, we embarked on a fast-paced project that required a team that was tenacious, communicative and able to act quickly.

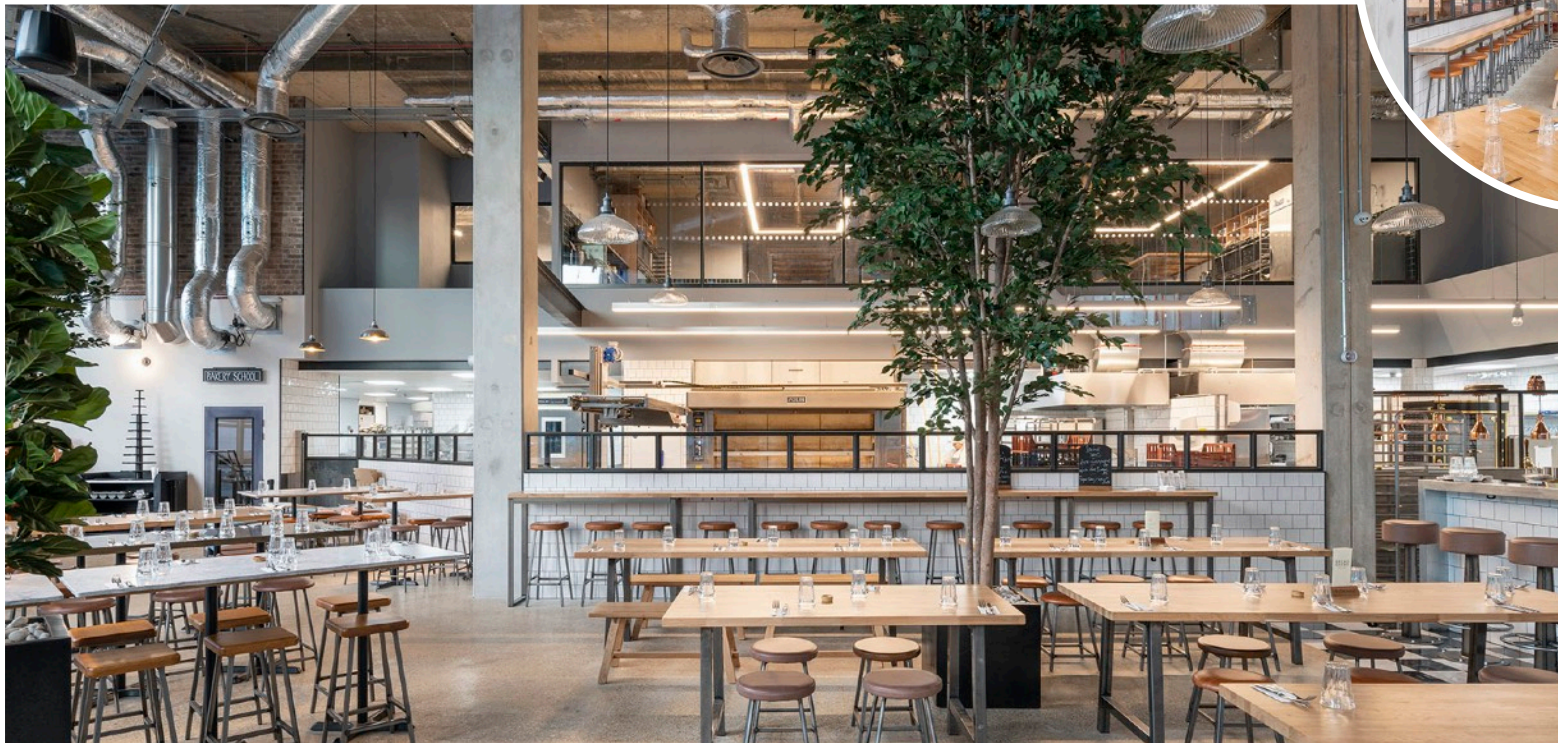
The restaurant has far surpassed my expectations, in particular the incredible attention to detail on the joinery work"



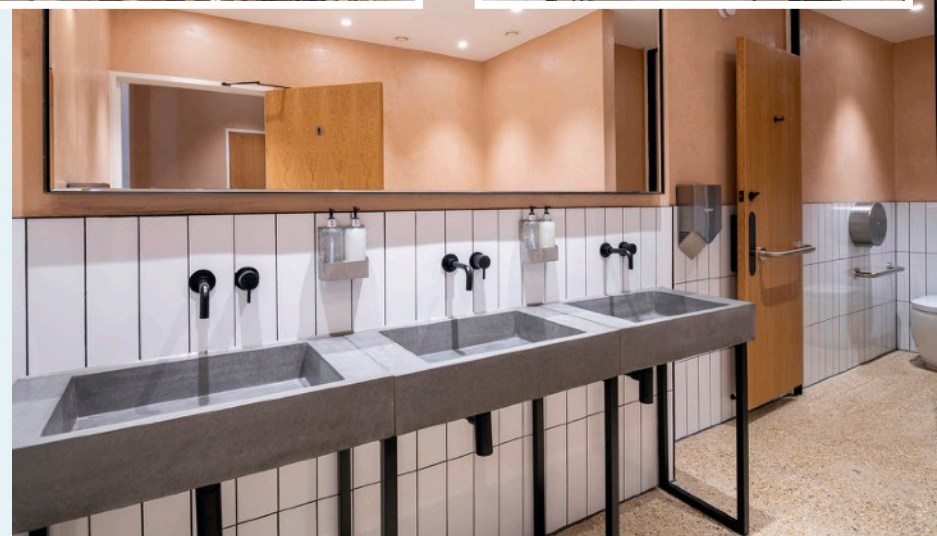
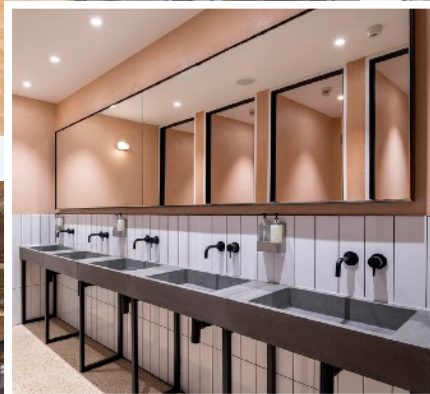
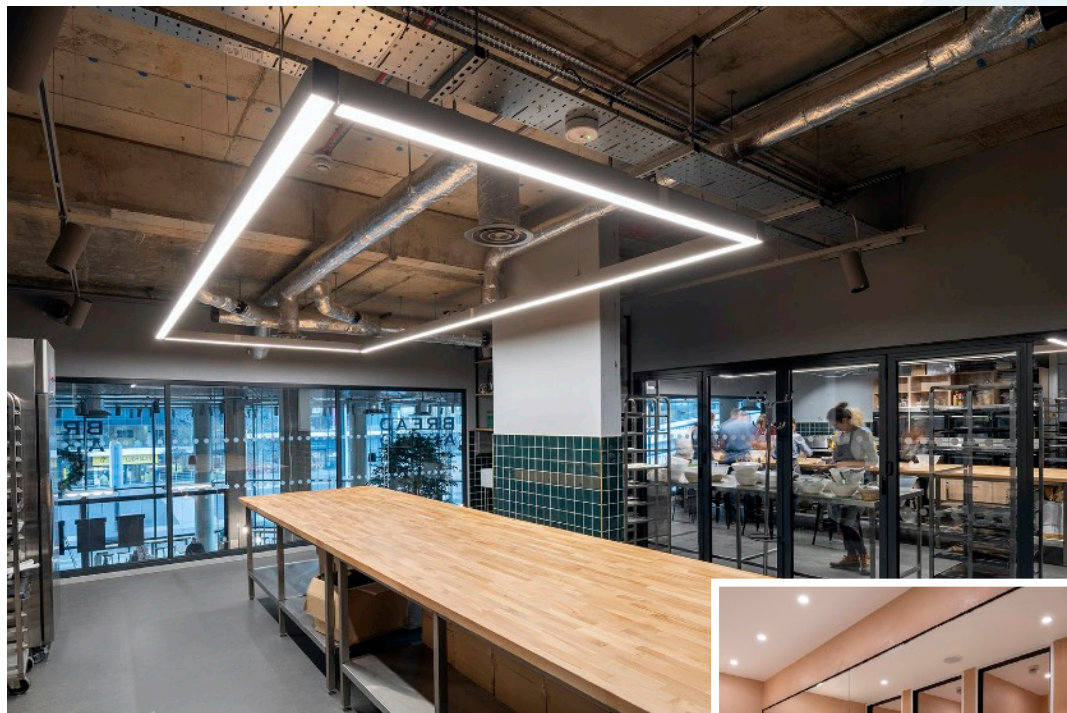
Bluecrow Projects

Bread Ahead

The Yard Creative



Bread Ahead, Wembley
The latest instalment from founder Matthew Jones. This project at 11,000 sq ft. Inside Bread Ahead includes a 220 cover restaurant, cafe and bar, two bakery classrooms for the new Gastro Bakery and School, a pizza oven and not forgetting a large open plan production bakery where the famous Bread Ahead doughnuts will be plentiful.

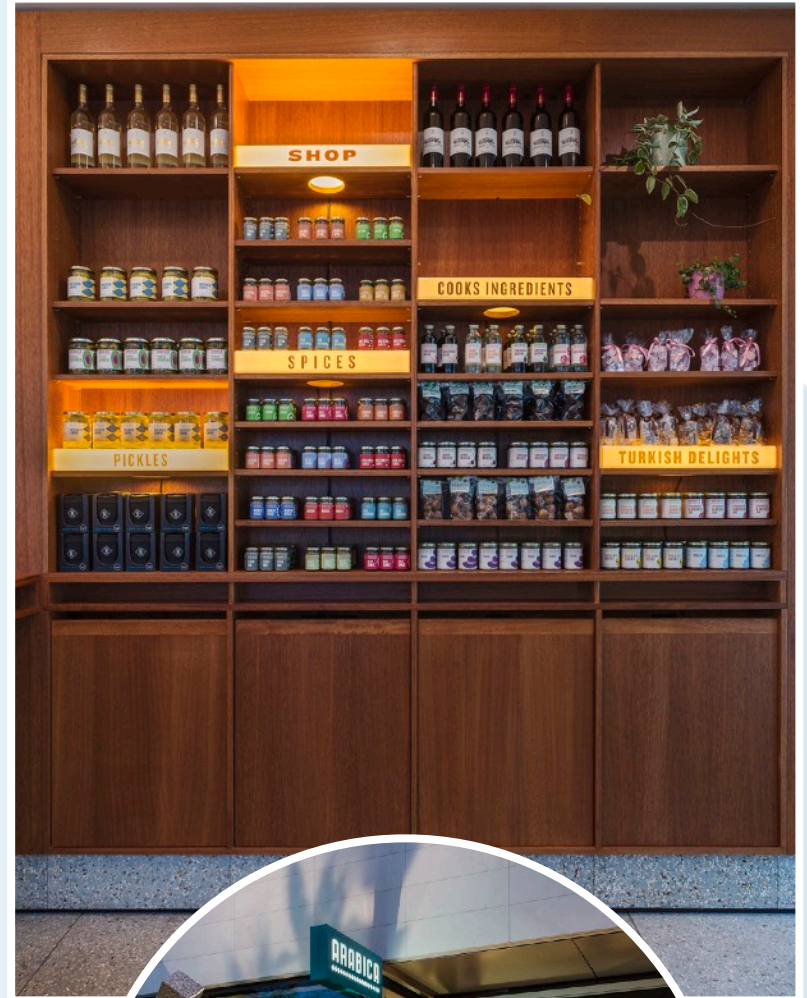


Bluecrow Projects

Arabica KX

Arabica is a restaurant in the Aga Khan building in Kings Cross London. Envisaged as a canteen for the local area, the design was influenced by the design of post war university campus buildings. The scheme uses a simple palette of materials, brown quarry tile floors, Iroko joinery, exposed aggregate concrete and green wool curtains.

Gundry + Ducker

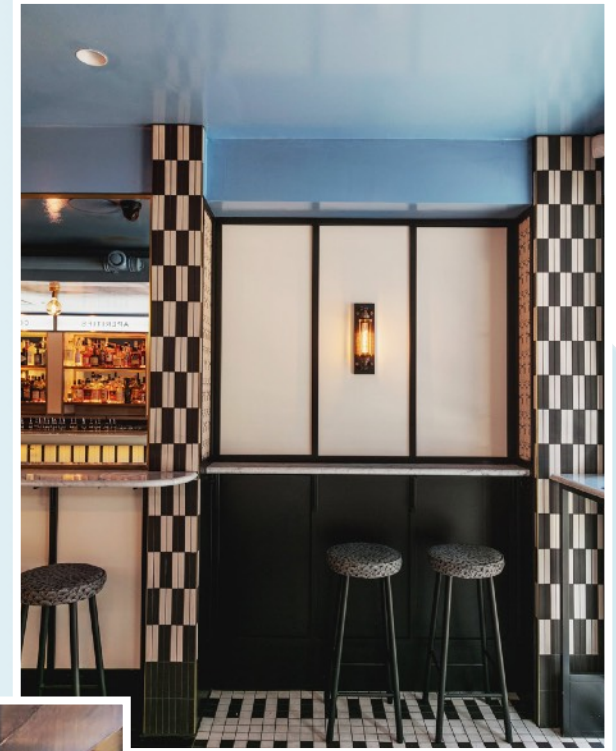




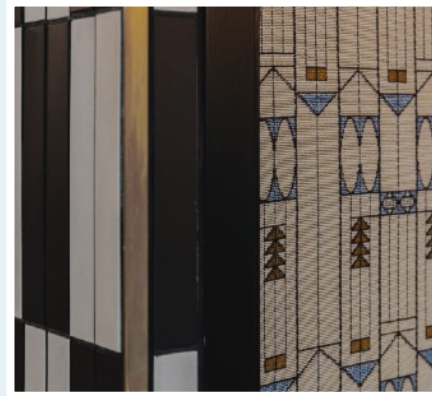
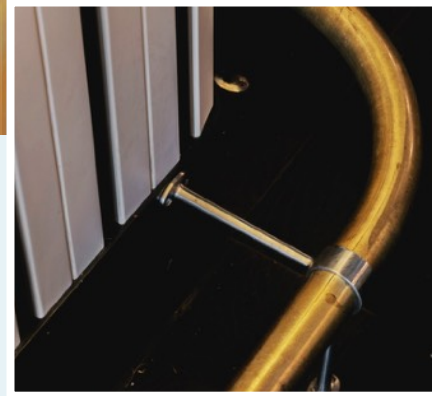
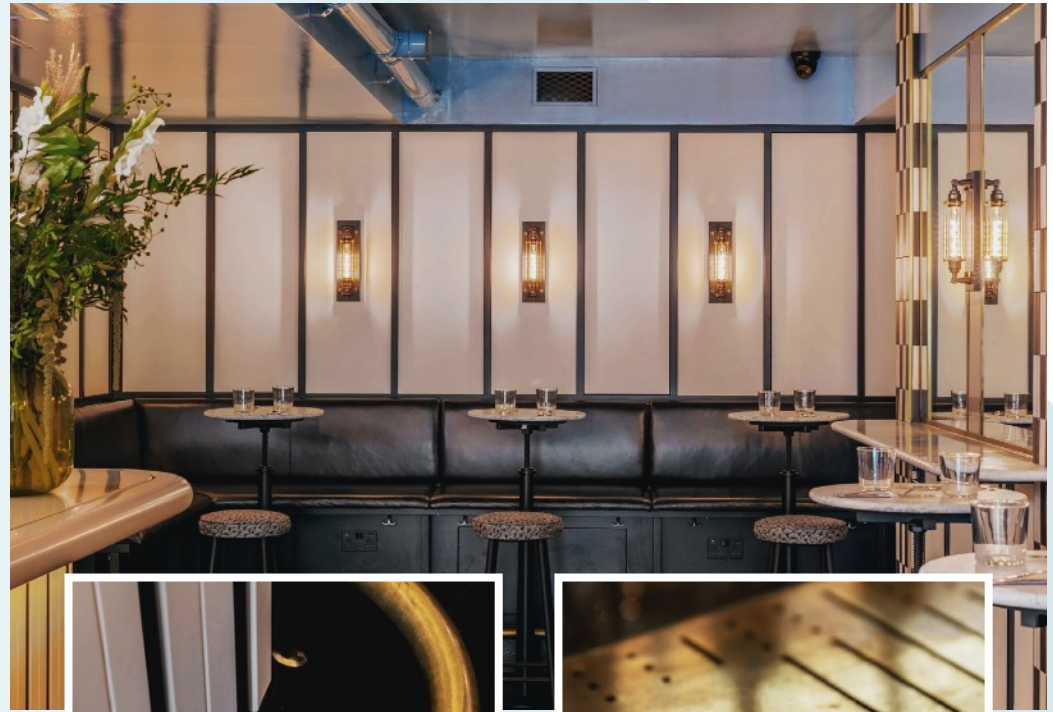
Bluecrow Projects

Bar Swift

Daytrip Studios



Swift Cocktail bars – A stunning new cocktail bar in Shoreditch from the team behind the successful cocktail bar in Soho. This highly detailed project comprised of a new shopfront, a large new bar with round top nosing including a special enamel top with a brass inlay trim, fixed seating, bespoke continuous wall panelling with contrasting feature fabric panels and new fixtures and finishes throughout.



Testimonials

This is the first project we have worked on with Bluecrow and have had no regrets as they delivered on every front with regards to their attention to detail and professionalism. Like any other project there were hurdles some bigger than others which Bluecrow approached as a challenge rather than a problem.

Bluecrow delivered the vision that DesignLSM envisaged culminating with Felix Restaurant receiving the prestigious “FAB award 2019” presented at their annual awards dinner held in May 2019. What more can we say, but thank you Bluecrow for your the professionalism and workmanship we have come to expect.

FELIX WARLEY, STEPHEN LI

Our first collaboration with Bluecrow saw the conversion of a tired office space into a bright and airy working environment. This unusual project, for a software company designing products for the restaurant industry, merged workspace and hospitality typologies; a full commercial kitchen enables the in-house chef to cook lunch for the 30 strong team daily. The Bluecrow team have been excellent to work with from tender to completion and there has been a shared ambition for the highest quality in every aspect of the project. We are extremely happy with the resultant fit-out and look forward to working together again in the near future.

PROJECTS OFFICE, JAMES CHRISTIAN

I have built a very strong relationship with Bluecrow over the last 5 years, working on a number of Japan Centre and Shoryu projects together. Most recently we completed Icihiba, Europe's largest Japanese food hall in Westfield London.

Bluecrow were brought on board very late in the project, and they quite literally had to hit the ground running; in my experience something few fit-out companies could do successfully. The end result was an outstanding build, that proved cost effective and delivered on time. They really do care about their clients, and this is for me what singles them out from the rest.

JAPAN CENTRE

Bluecrow recently undertook an 8 week fit-out of our restaurant in Chinatown. We could not be more pleased with the service we received from their team. From the tender process, fit out, and handover, Bluecrow really went above and beyond in delivering a high quality fit-out. We are extremely pleased with the results of their fit-out and we are excited to work with them again in the future.

BUN HOUSE

I wanted to write a personal note to thank you for all the hard work and patience you have shown throughout the process, the restaurant looks absolutely incredible and we got there in the end. You have been a joy to work with and I hope we can collaborate on more projects in the near future.

All the best. AFRODITI KRASSA

Dear Simon, Last night Bill and Granger and Co won the Conde Nast Traveller Innovation and Design Award in the category Gourmet. We shared the award with the Delaunay. We are completely thrilled about this! Thank you for yours and your team's work on the restaurant. This is a wonderful validation of our efforts to create a fabulous restaurant! Congratulations, and thank you enormously for your commitment to and hard work creating Granger and Co.

GRANGER & CO, NATALIE

More testimonials can be found on our website: www.bluecrowprojects.com