

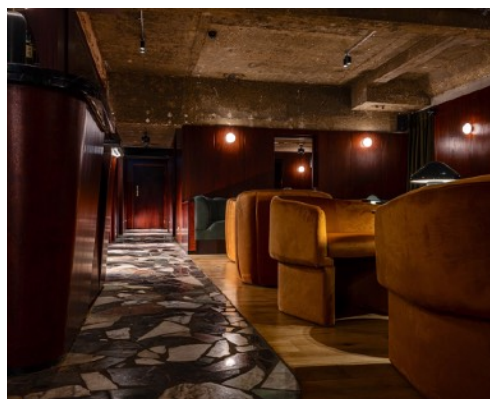
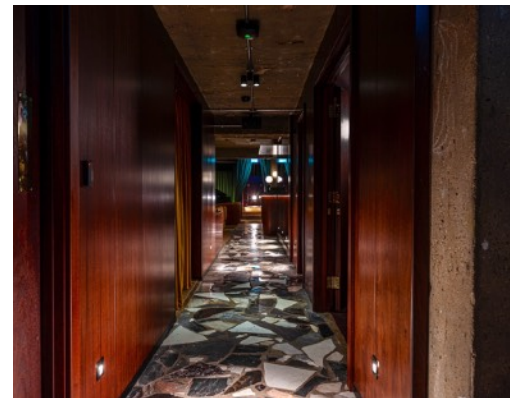
CITY ARTS



A design-lead cocktail bar in the city of London offering late night refreshment, live music & private dining in a relaxed and discreet atmosphere with the basement comprising of an eye catching hand-crafted bespoke Sapele main bar & illuminated back bar.

The strategically placed bar lamps at either end are like guiding lights, showcasing the Nero Mequina marble curved countertop in all its glory.

The original floor was sympathetically retained, receiving a professional sanding process with a durable yet hard wearing matt clear lacquer to retain its character, and with a brief from the client, they wanted Italian Marble "crazy paving" around the front of the main bar with a 3mm brass strip perfectly framing the stone and the timber floor to give it that detailed finish appearance. Much more can be found on our website.



When it comes to shopfitting, Bluecrow specialise in the restaurant, bar and retail sectors. We have the confidence, knowledge and expertise to deliver your vision on time and within budget.