

GLASS HOUSE

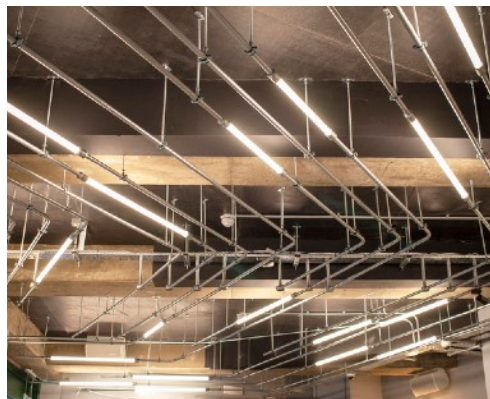
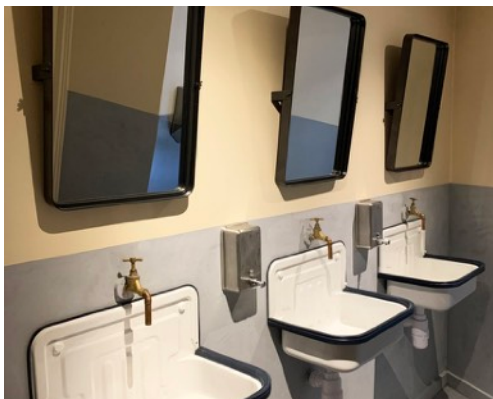


The latest instalment from Alex and Z he, a new community space for people to work and collaborate together during the day and then socialise during the evening.

Just like their previous achievements and again designed by Z he herself, the glass fronted building incorporates spaces for hot desking, with a large terrazzo counter supplying fresh coffee during the day and cocktails and beer in the evening and glass-encased recording studio for live podcasting.



A major focal point within the Glass House is The LED strip lighting. This, another great design from Z he, runs through ten's of metres of galvanised piping and whilst standing out, isn't obtrusive and can be dimmed down in the evenings while socialising.



When it comes to shopfitting, Bluecrow specialise in the restaurant, bar and retail sectors. We have the confidence, knowledge and expertise to deliver your vision on time and within budget.