

# KAPARA

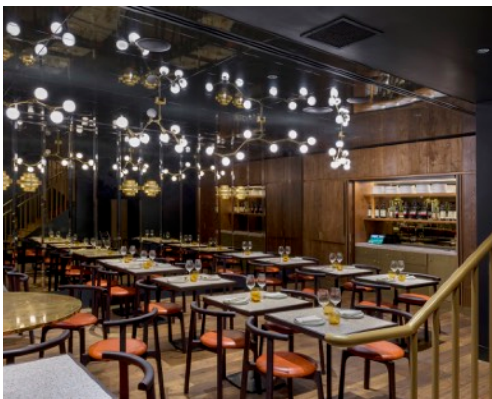


Design and material choices throughout this project make Kapara that little bit more quirky from the rest. As you walk into the large open space you are greeted with mosaic and brick slip tiled flooring, bespoke LED bar arches with floating shelves, banquette and timber nook booths, chandeliers and much more.

Seating within was designed so that tables and chairs could be configured to suit every eventuality, with an additional bespoke leaner bar at the kitchen, so you can watch the chefs prepare the wonderful menu.



The restrooms consist of a bespoke hand fabricated vanity unit, made by Bluecrow Joinery. Interestingly the material used was 100% recycled from old cosmetic containers. Many hours were spent fabricating the shapes to ensure all welds sealed watertight, and incorporated floor level of LED illumination.



When it comes to shopfitting, Bluecrow specialise in the restaurant, bar and retail sectors. We have the confidence, knowledge and expertise to deliver your vision on time and within budget.