

# STANFORD MAPS

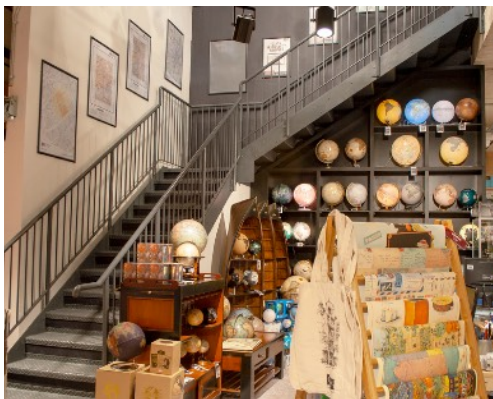


Stanford Maps was an 8 week fit-out of an existing unit on Mercers Walk. The package including a new lighting schedule, air conditioning and featuring new birch ply joinery including over 90 new bookcases, over 40 map display shelves and much more.



The ground floor featured a cash desk and café counter with hi-mac tops and rustic oak cladding, whilst the lower ground floor has globe and map wall features allowing the Stanford group a chance to really showcase some of the interesting gifts.

With Christmas fast approaching and a start date on site of 29<sup>th</sup> October, Bluecrow had just 4 weeks to finish the refurbishment of the ground floor area in order for Stanfords to start trading their shop prior to Christmas and the lower ground floor being completed in the remaining 4 weeks.



When it comes to shopfitting, Bluecrow specialise in the restaurant, bar and retail sectors. We have the confidence, knowledge and expertise to deliver your vision on time and within budget.