



PROJECT STUDY

Bluecrow Projects Ltd  
Shopfitting, Refurbishment & Project Management

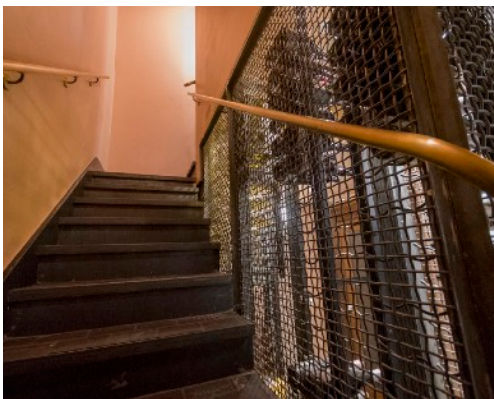
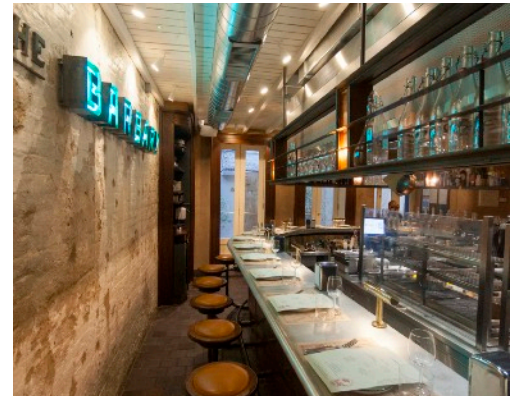
# BARBARY



Bluecrow Projects have had great pleasure in working with The Barbary creating what we believe to be a simply amazing fit-out, this has been backed up by winning London's Best Restaurant - Timout London for both 2017 and 2018.

The Barbary is situated in the iconic Neal's Yard in Covent Garden. The restaurant takes inspiration from the Barbary Coast, identified by 16th century Europeans as the area settled by the Berbers in the Atlas Mountains.

The Barbary menu reflects the countries from the Atlantic Coast through to the Mediterranean Sea leading to Israel. All these countries have rich culinary traditions, exotic products, flavoursome spices and cooking techniques passed down through generations.



When it comes to shopfitting, Bluecrow specialise in the restaurant, bar and retail sectors. We have the confidence, knowledge and expertise to deliver your vision on time and within budget.



Registered in England. Company No. 6768390  
Bluecrow Projects Ltd. 14 Cambridge Westpoint, Stirling Way, Papworth Everard, CB23 3GY  
[www.bluecrowprojects.com](http://www.bluecrowprojects.com) • 01480 830 099 • [info@bluecrowprojects.com](mailto:info@bluecrowprojects.com) • @BluecrowTeam

