



Interior Fit Out Contractor
www.bluecrowprojects.com

Bluecrow Projects

20 Berkeley

“A celebration of produce, skilled artisans and timeless craftsmanship”
Nestled in the heart of Mayfair, 20 Berkeley offers a dining experience in a timeless setting. The restaurant's entrance blends into the building's façade with its elegant custom awning and bespoke joinery shopfront.

Pirajean Lees





Bluecrow Projects

Lucky Cat

By Gordon Ramsay

Afroditi Krassa

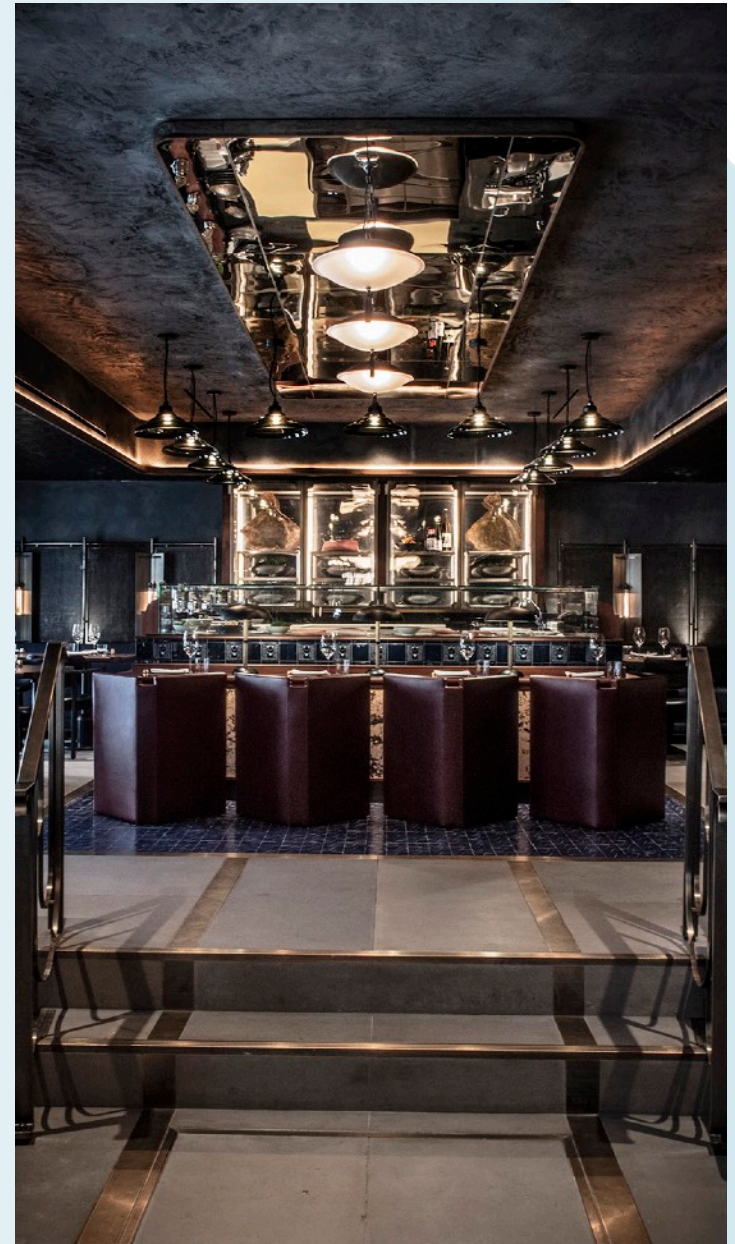


The showpiece bar frontage is complimented throughout the design with intricate brass details and accents.

“Lucky Cat has been a long-time vision for me and I can’t wait to bring it to life,” says Gordon Ramsay.



Lucky Cat takes its inspiration from drinking dens of the 1930's Tokyo with many sensational bespoke design features including the bar which is faced with intricate brass bamboo panelling.



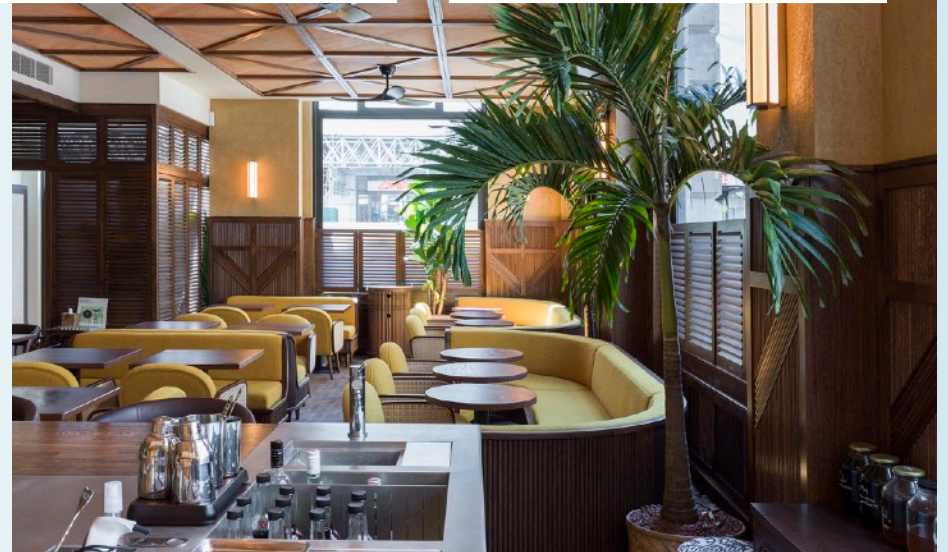
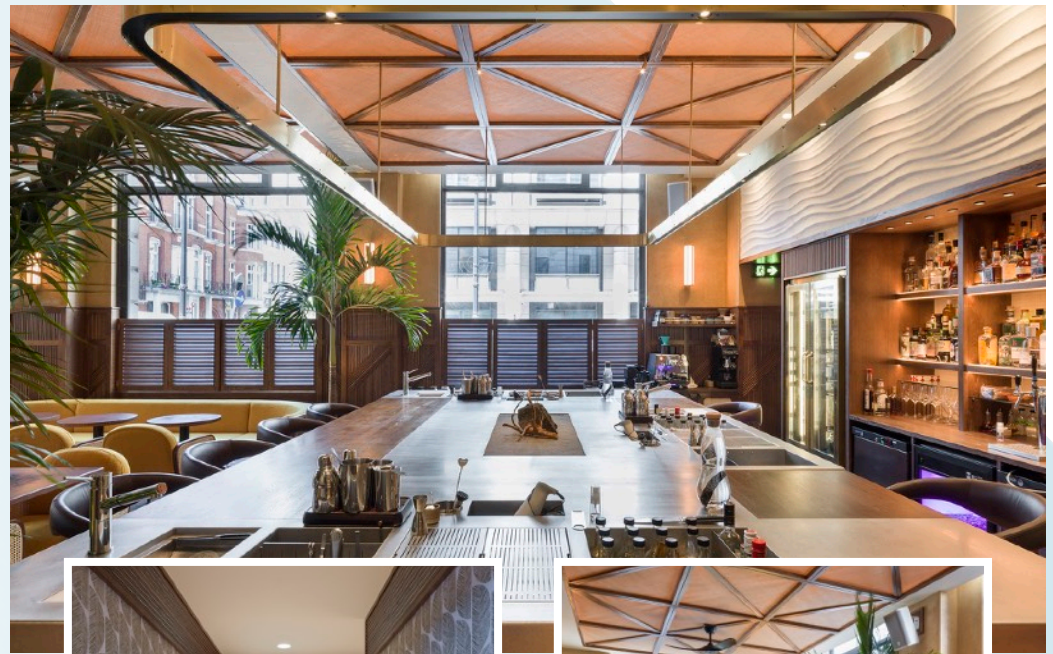
Bluecrow Projects

Kwant

Code_Studios



Fluted wall panelling, solid window shutters, bladder doors and screens all hand-made in solid Oak, compliment the major ceiling feature of individually illuminated wooded Rattan panels. The prestigious bar incorporates Oak paneling with solid Oak bar top inserts and an impressive bespoke brass lighting gantry, all surrounded in forest green Indian flooring made from a single slab or marble.



Bluecrow Projects

HUMO

The debut restaurant by Colombian-born chef Miller Prada, the protégé of celebrated chef Endo Kazutoshi.

Key features within HUMO are the 9m long, hand-made bar which was sourced from the same farm head chef Miller Prada sources his timber for cooking with, and a 2 ton Marble sink, CNC diamond cut from a 13 ton Dark Emperador Spanish marble block.



Afroditi Krassa





Bluecrow Projects

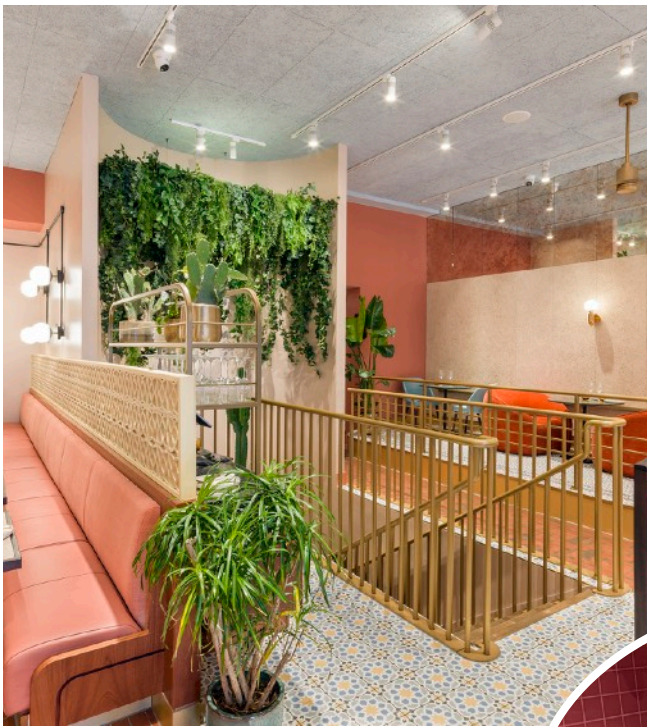
Kapara

Design and material choices throughout this project make Kapara that little bit more quirky from the rest. As you walk in you are greeted with mosaic and brick slip tiled flooring and bespoke LED bar arches with floating shelves, standing proud above the 8m long brass top bar. Not forgetting the hand-made vanity unit, which is fabricated from 100% recycled cosmetic containers.



Raven Collective





Bluecrow Projects

Felix Warley

DesignLSM

“We would really like to thank the Felix team for the opportunity to work with them on this very special project and the Bluecrow team for executing the design with such precision and passion.

What a journey...”





Bluecrow Projects

The Laundry

3Stories Design



“Having had the pleasure to be introduced to Bluecrow via our wicked Design Team 3 Stories, we embarked on a fast-paced project that required a team that was tenacious, communicative and able to act quickly.

The restaurant has far surpassed my expectations, in particular the incredible attention to detail on the joinery work”



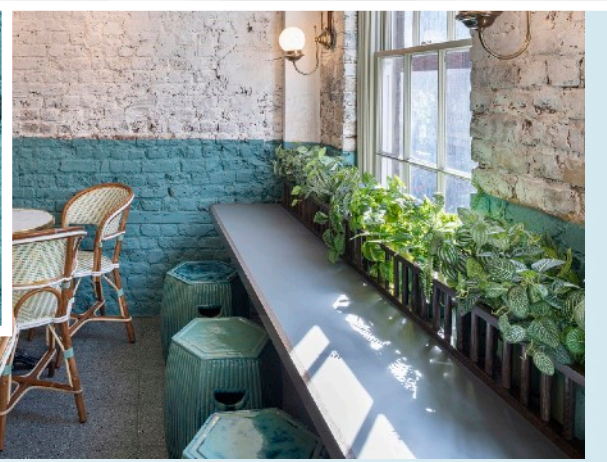
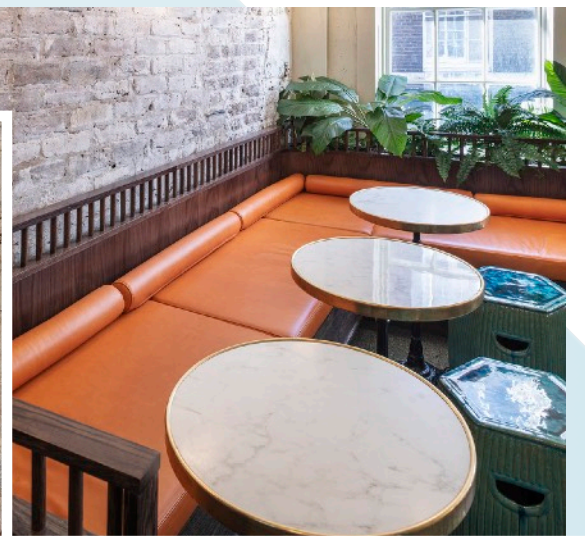
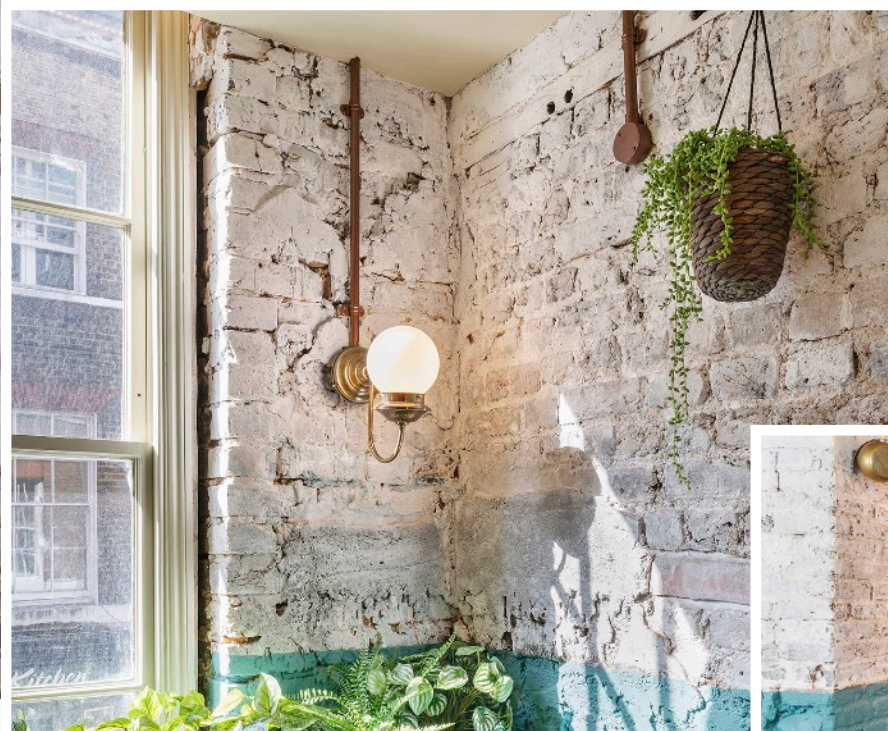
Bluecrow Projects

Bun House



“We could not be more pleased with the service we received from their team. From the tender process, fit out, and handover, Bluecrow really went above and beyond in delivering a high quality fit-out.”





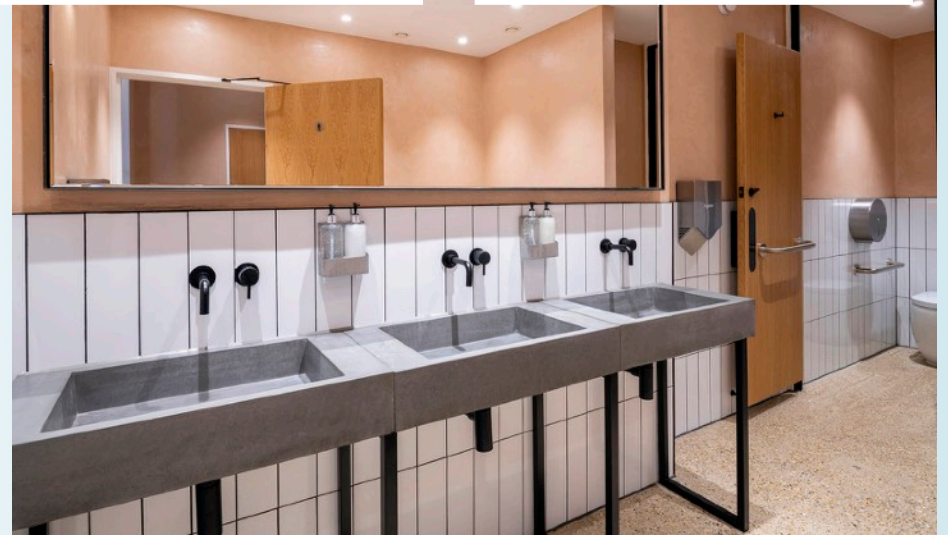
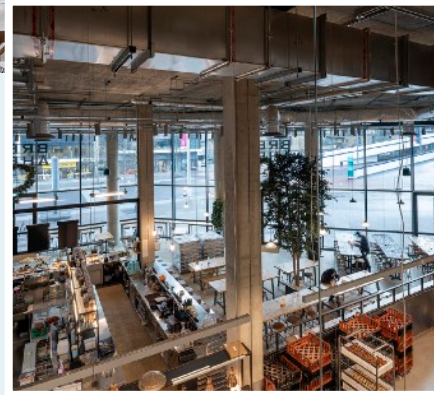
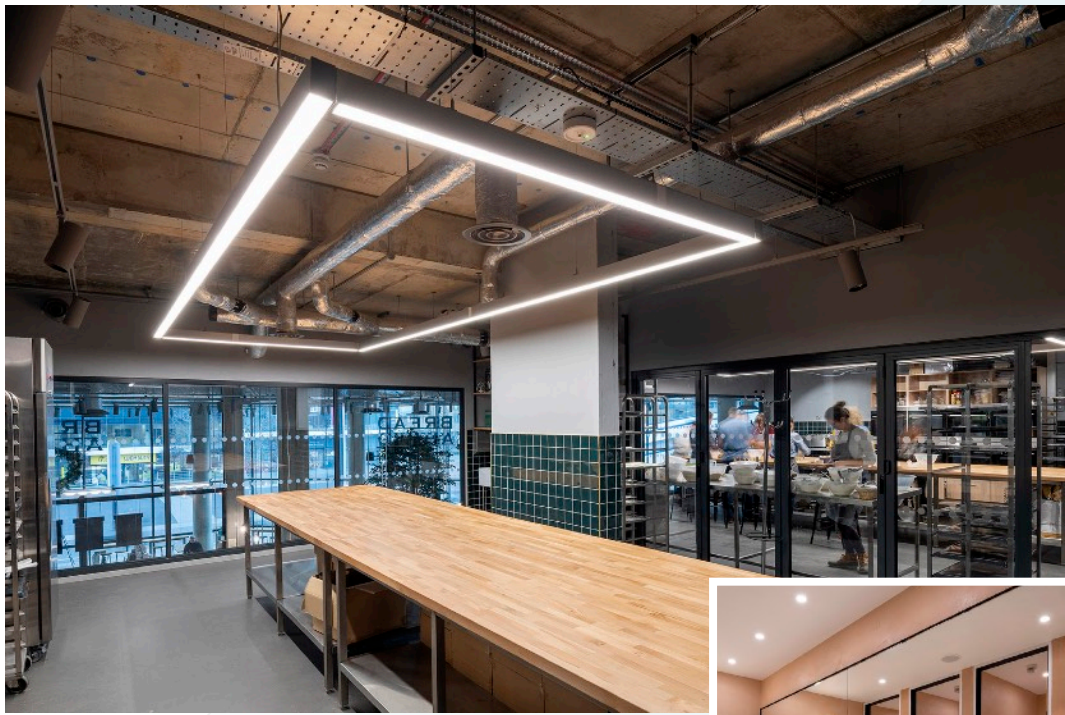
Bluecrow Projects

Bread Ahead

The Yard Creative



Bread Ahead, Wembley
The latest instalment from founder Matthew Jones. This project at 11,000 sq ft. Inside Bread Ahead includes a 220 cover restaurant, cafe and bar, two bakery classrooms for the new Gastro Bakery and School, a pizza oven and not forgetting a large open plan production bakery where the famous Bread Ahead doughnuts will be plentiful.

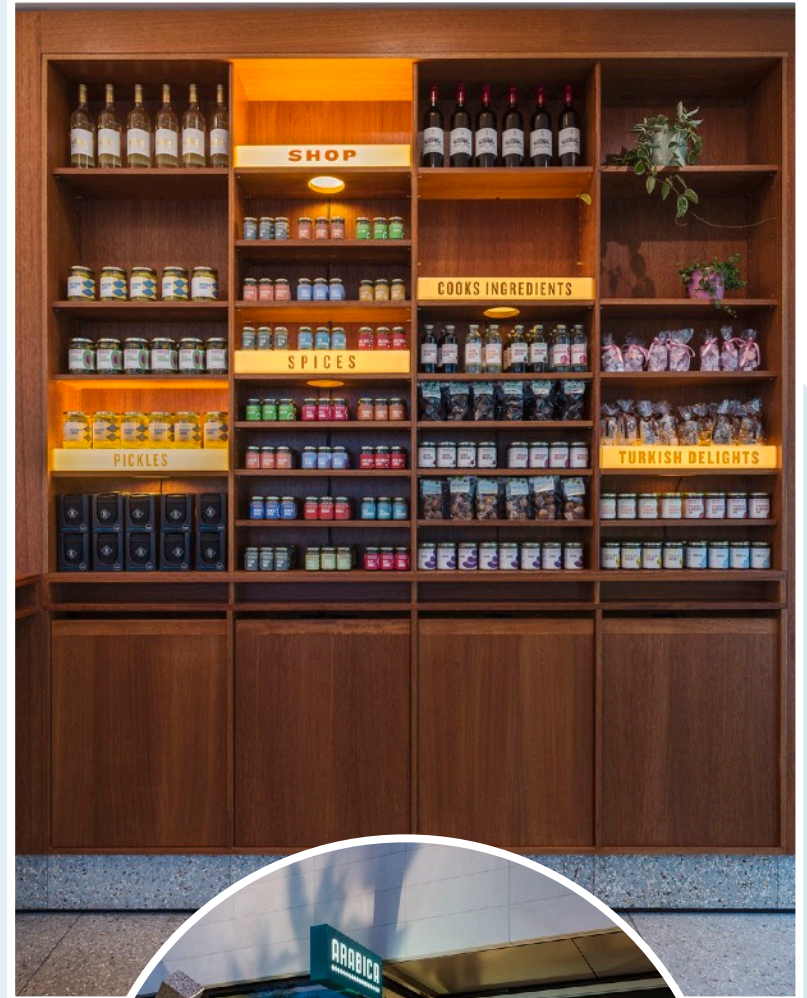


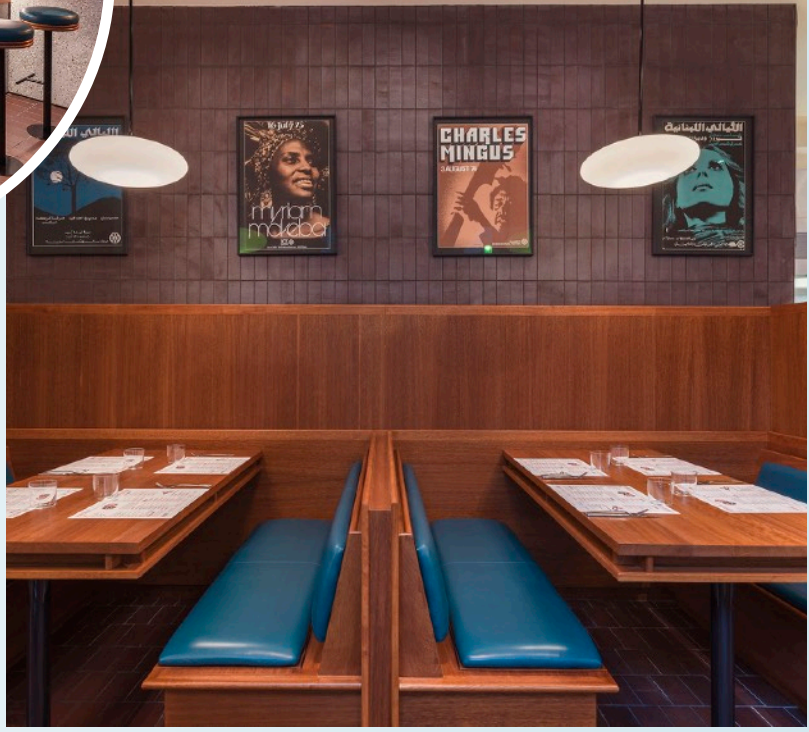
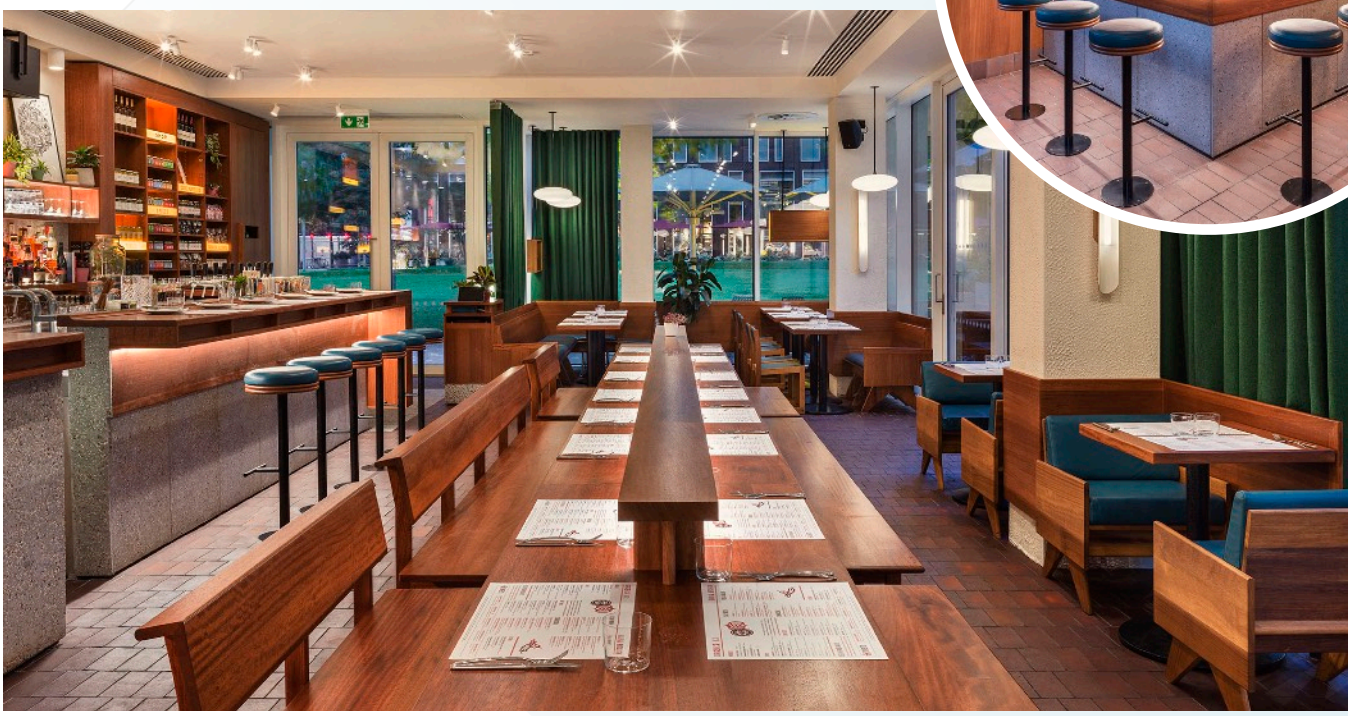
Bluecrow Projects

Arabica KX

Arabica is a restaurant in the Aga Khan building in Kings Cross London. The design was influenced by the design of post war university campus buildings. The scheme uses materials ranging from, brown floor quarry tiles, Bespoke Iroko joinery including leather banquette seating, Iroko bar tops with Terrazzo frontage and exposed aggregate concrete.

Gundry + Ducker

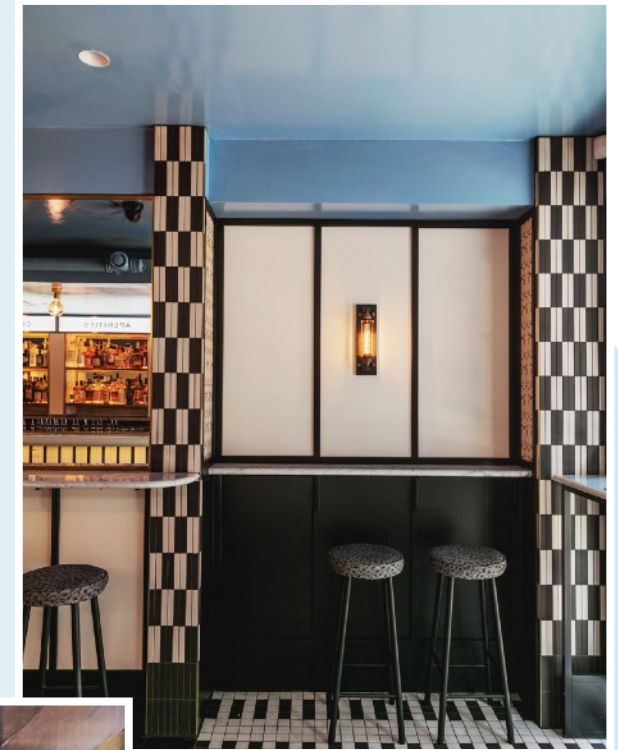




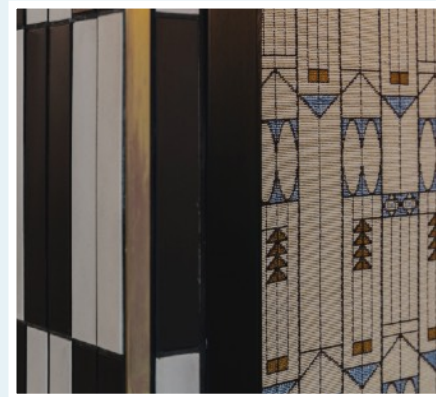
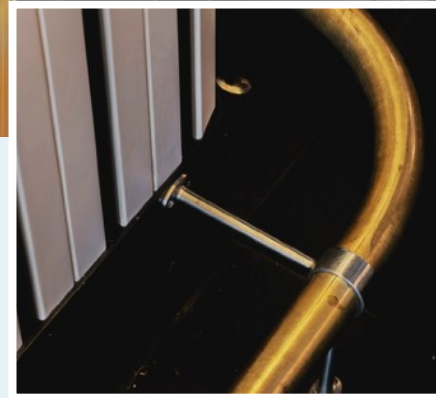
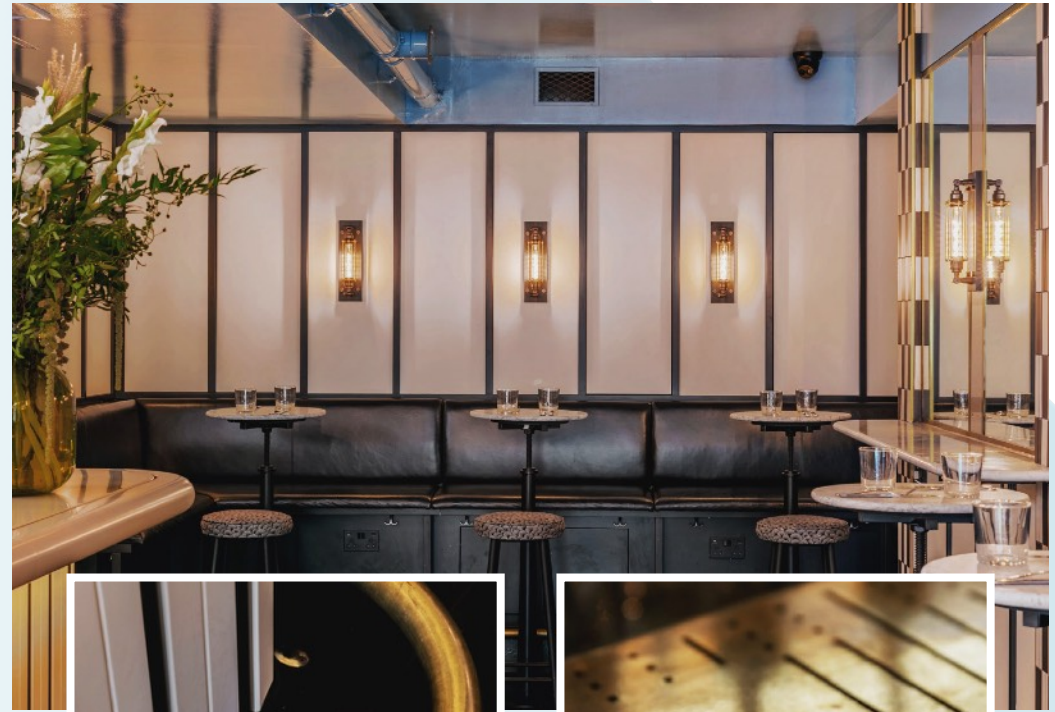
Bluecrow Projects

Bar Swift

Daytrip Studios



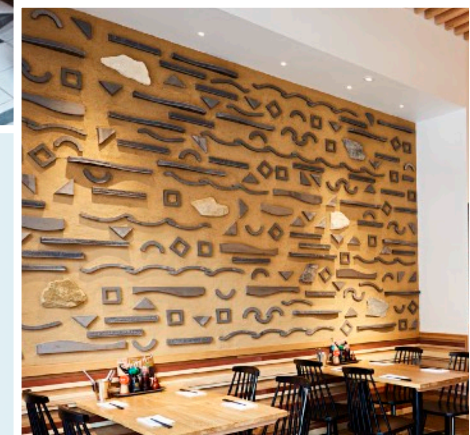
Swift Cocktail bar - Shoreditch
This highly detailed project comprised of a new shopfront, a large new bar with round top nosing including a special enamel top and brass inlay trim. With the addition of fixed seating, bespoke continuous wall panelling, contrasting feature fabric panels and new fixtures and finishes throughout, the end result is frankly breathtaking.



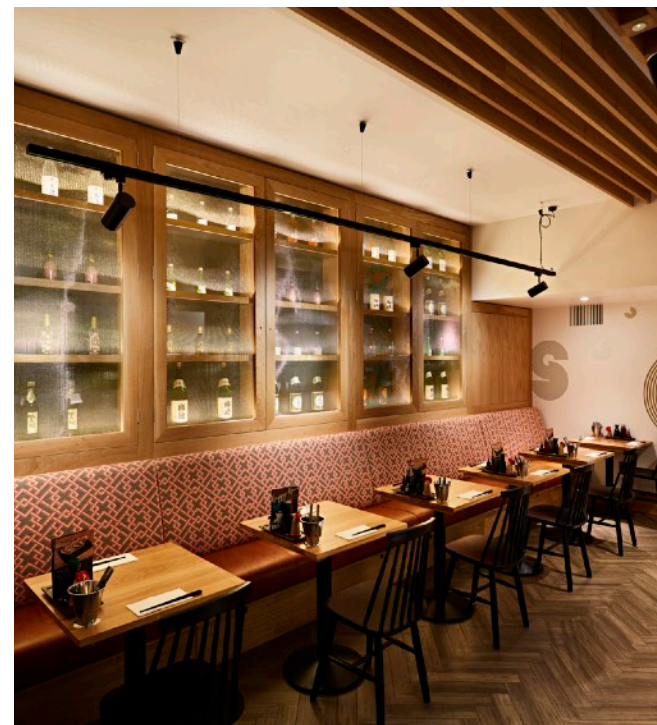
Bluecrow Projects

Shoryu

Blenheim Design

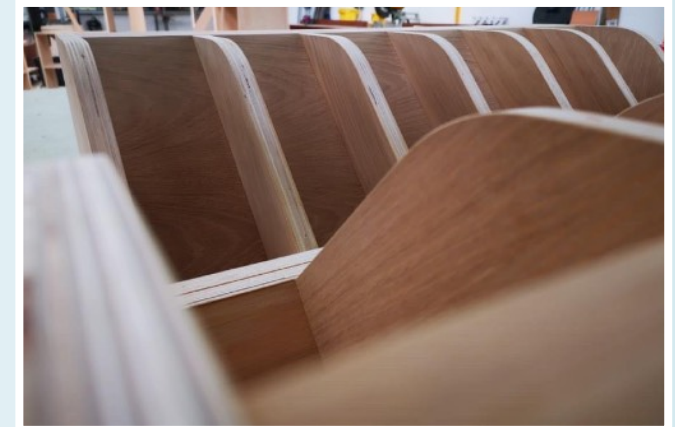


The legendary Hakata Wall made from specialist stone tiles, all trimmed to the pattern required then infilled with a special finish made from straw and plaster and paint. A wonderful focal point and made in a traditional manner.



Bluecrow Joinery

Bluecrow Joinery like our sister company specialises in the restaurant, retail and residential sectors. Our wonderful team of Cabinet Makers and Joiners have vast experience in their field ensuring quality, love and detail is injected into every finished product.

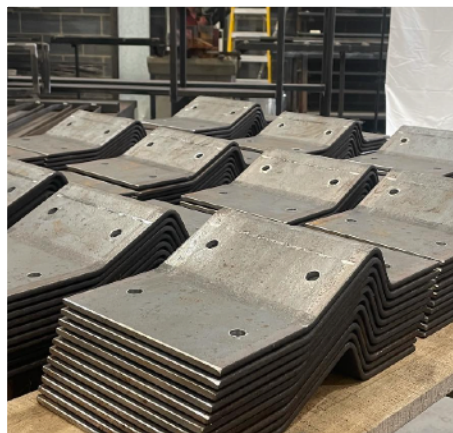


- Bluecrow Joinery providing a complete service from concept to manufacture
- Approved solid surface fabricator using materials such as Corian, Hanex
- Fully equipped spray shop with built in booths providing a variety of finishes including Specialist finishes such as liquid metal

Bluecrow Metalworks

Bluecrow Metalworks brings something fresh to the team with bespoke metalwork fabrication. Whether you require gantries, gates, railings or staircases, pretty much any bespoke requirements, we can help.

We have a fully equipped premises allowing fabrication by cutting and bending, with welding from Tig & Mig. We also have a CNC Plasma cutting machine, where all conductive materials can be processed quickly and economically.



Testimonials

I wanted to write a personal note to thank you for all the hard work and patience you have shown throughout the process, the restaurant looks absolutely incredible and we got there in the end. You have been a joy to work with and I hope we can collaborate on more projects in the near future.

AFRODITI KRASSA

The project team did very well and I am very pleased with it. Bluecrow in particular did an amazing job!. So far customer feedback has been very positive, with guests being particularly interested in the unusual design of the bar.

KWANT, ERIK LORINCZ

When I started thinking about HUMO two years ago, I had many ideas. I wanted create a very special place and this is a dream come true for me, I wanted to make sure that every detail had a story to tell and we had as much attention to all details as possible. Seeing the dream come to life and exceed the expectations in my mind has been a great experience. Working together we have achieved an amazing place where we can give our guests memories of a great meal. HUMO, MAYFAIR – MILLER PRADA

I have built a very strong relationship with Bluecrow over the last 5 years, working on a number of Japan Centre and Shoryu projects together. Most recently we completed Ichiiba, Europe's largest Japanese food hall in Westfield London.

Bluecrow were brought on board very late in the project, and they quite literally had to hit the ground running; in my experience something few fit-out companies could do successfully. The end result was an outstanding build, that proved cost effective and delivered on time. They really do care about their clients, and this is for me what singles them out from the rest.

JAPAN CENTRE

The Bluecrow Team were a joy to work with throughout this project. Their “can do” approach to some really challenging design specs and finishes helped ensure the our new venue looks a million dollars.

Nightjar & Swift Bars, EDMUND WEIL

There's a few people we need to shout about because they made our literally bakery dreams come true: The Bluecrow Team literally built the kitchen, and our Soho Shop from scratch, it's everything we wanted and more! CRUMBS & DOILIES

This is the first project we have worked on with Bluecrow and have had no regrets as they delivered on every front with regards to their attention to detail and professionalism. Like any other project there were hurdles some bigger than others which Bluecrow approached as a challenge rather than a problem.

Bluecrow delivered the vision that DesignLSM envisaged culminating with Felix Restaurant receiving the prestigious “FAB award” presented at their annual awards dinner. What more can we say, but thank you Bluecrow for your the professionalism and workmanship we have come to expect. FELIX WARLEY, STEPHEN LI

More testimonials can be found on our website: www.bluecrowprojects.com